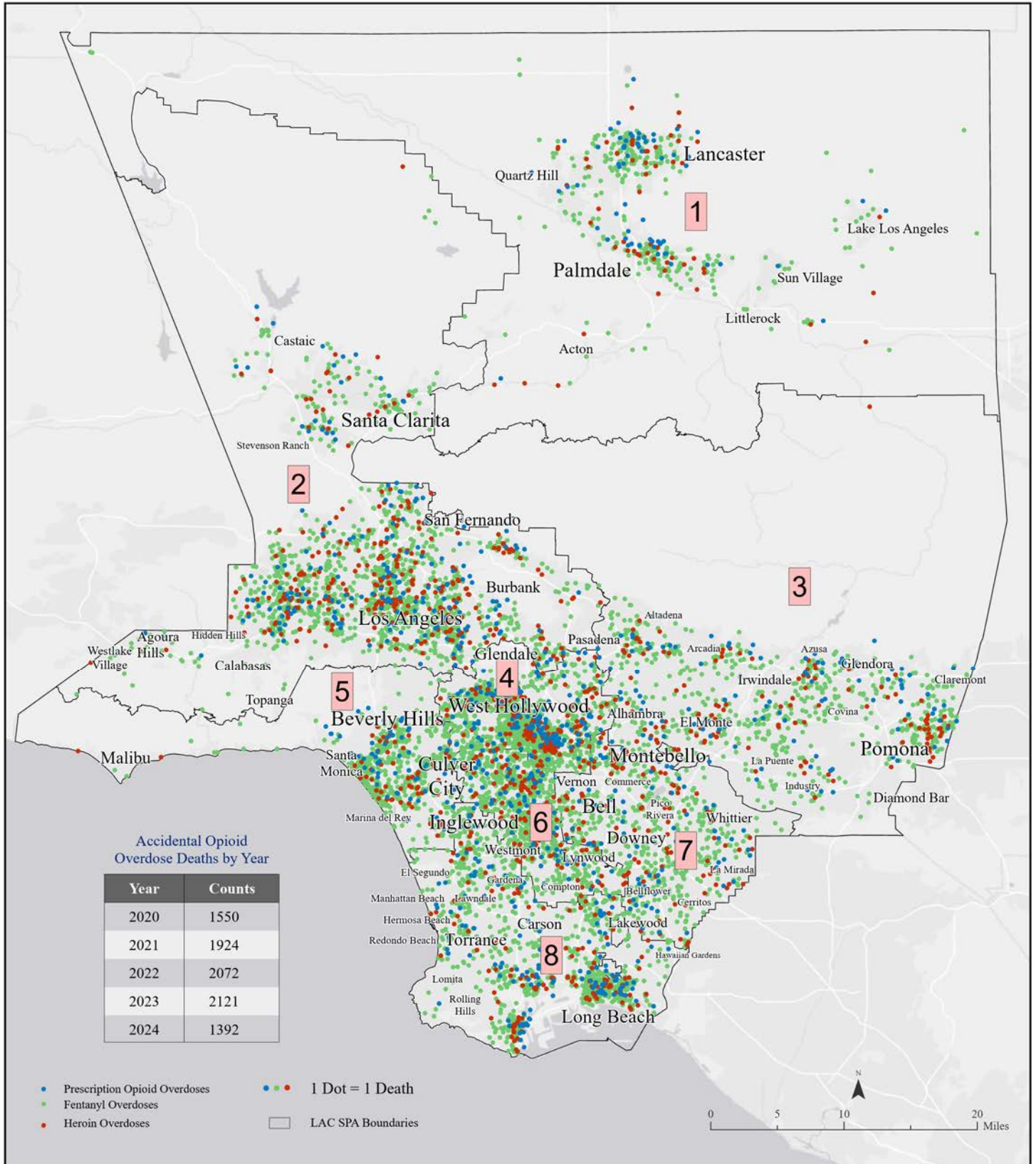


Accidental Opioid Overdose Deaths by SPA Los Angeles County, 2020 - 2024.

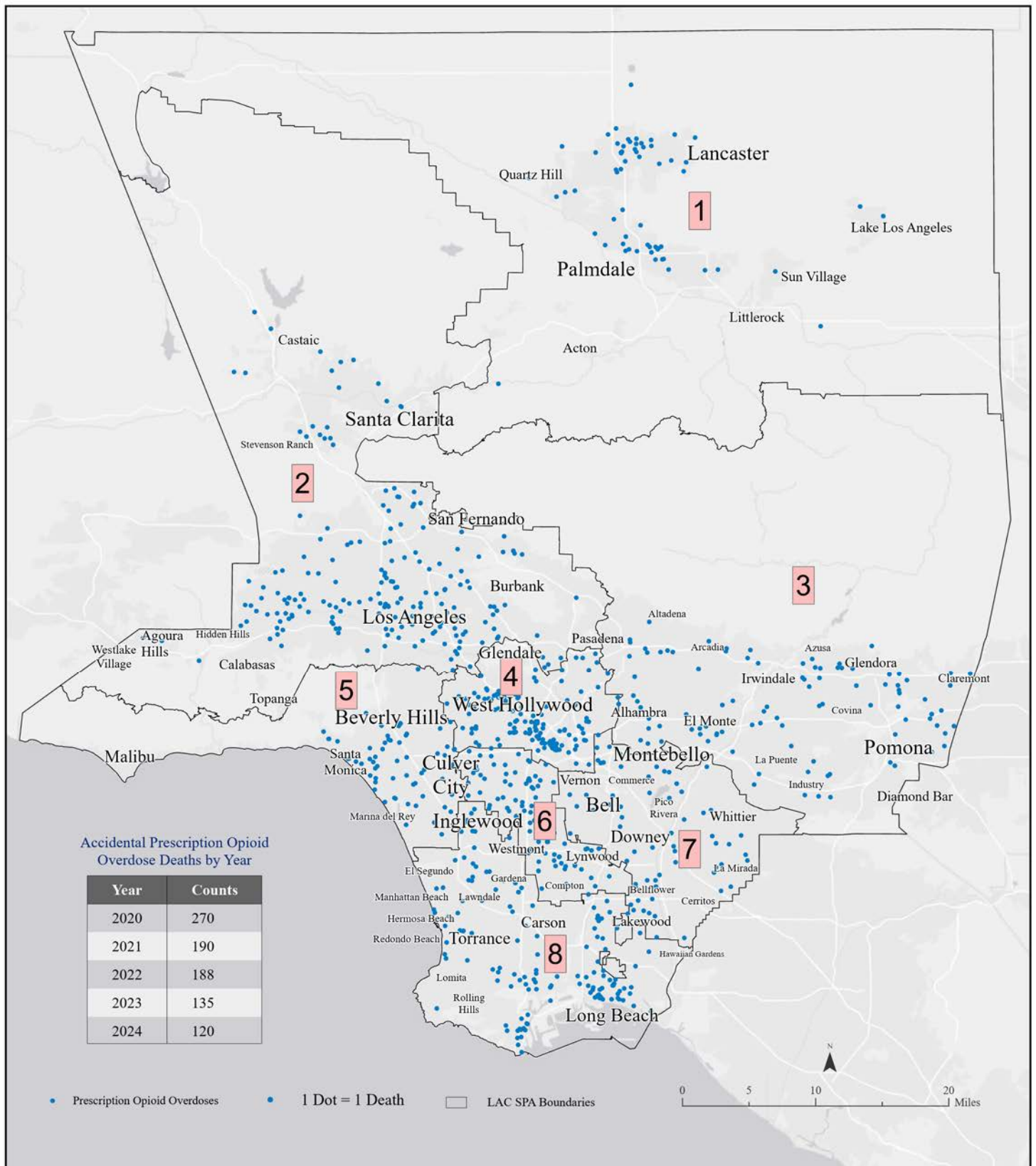


Data sources: SPA boundary retrieved from LAC eGIS repository updated 2022. 2020-2024 drug overdose deaths obtained from the LAC Medical Examiner-Coroner and processed by the Surveillance Data and Evaluation section and map produced by GIS section, Health Outcomes and Data Analytics (HODA) Division at SACC.

Contact: Any questions for the map contact Tina Kim, Ph.D at tkim@ph.lacounty.gov

Please note that drugs involved in an overdose death are not mutually exclusive, as overdose deaths often involve more than one drug

Accidental Prescription Opioid Overdose Deaths by SPA Los Angeles County, 2020 - 2024.

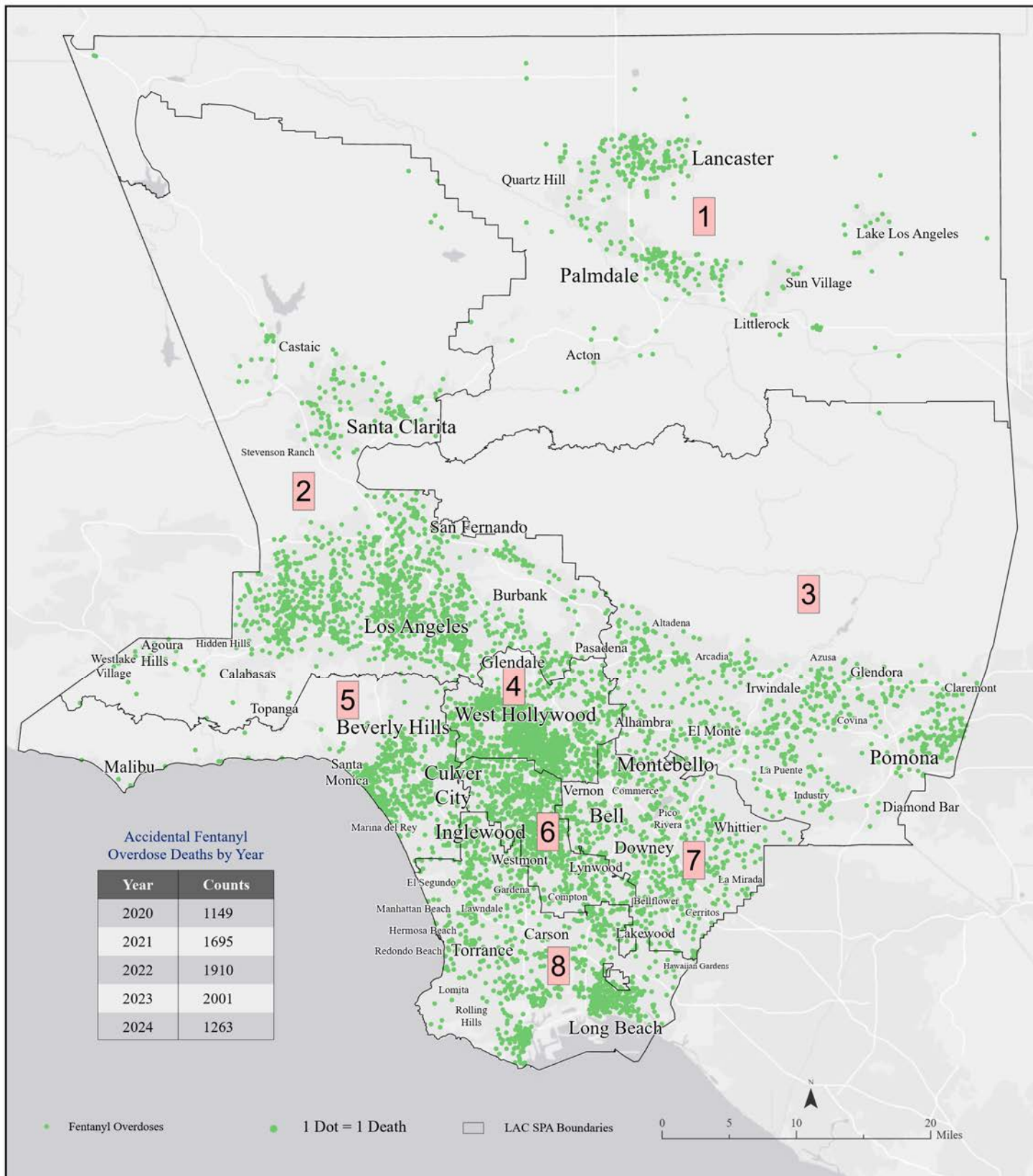


Data sources: SPA boundary retrieved from LAC eGIS repository updated 2022. 2020-2024 drug overdose deaths obtained from the LAC Medical Examiner-Coroner and processed by the Surveillance Data and Evaluation section and map produced by GIS section, Health Outcomes and Data Analytics (HODA) Division at SACP.

Contact: Any questions for the map contact Tina Kim, Ph.D at tkim@ph.lacounty.gov

Please note that drugs involved in an overdose death are not mutually exclusive, as overdose deaths often involve more than one drug

Accidental Fentanyl Overdose Deaths by SPA Los Angeles County, 2020 - 2024.

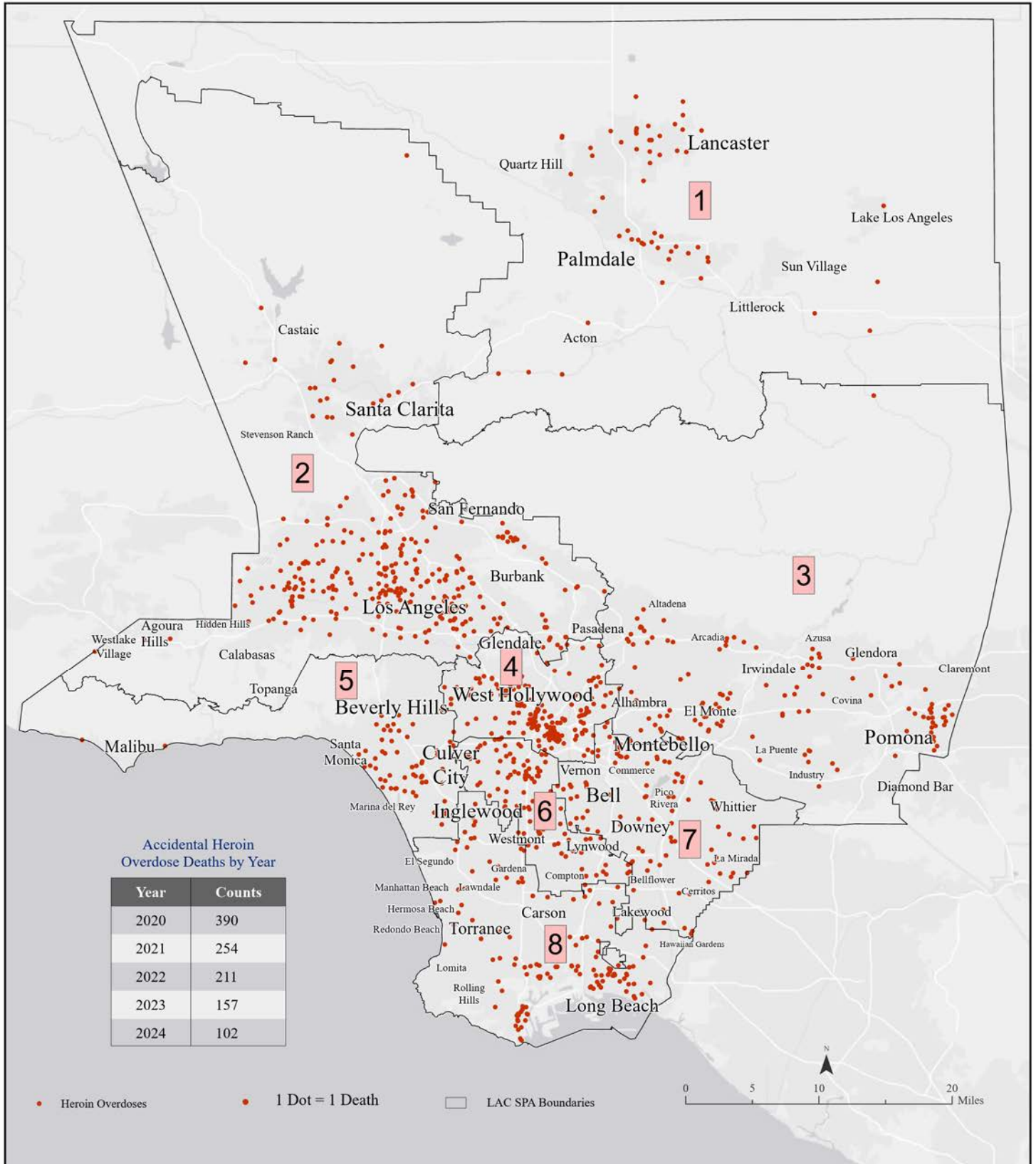


Data sources: SPA boundary retrieved from LAC eGIS repository updated 2022. 2020-2024 drug overdose deaths obtained from the LAC Medical Examiner-Coroner and processed by the Surveillance Data and Evaluation section and map produced by GIS section, Health Outcomes and Data Analytics (HODA) Division at SACP.

Contact: Any questions for the map contact Tina Kim, Ph.D at tkim@ph.lacounty.gov

Please note that drugs involved in an overdose death are not mutually exclusive, as overdose deaths often involve more than one drug

Accidental Heroin Overdose Deaths by SPA Los Angeles County, 2020 - 2024.

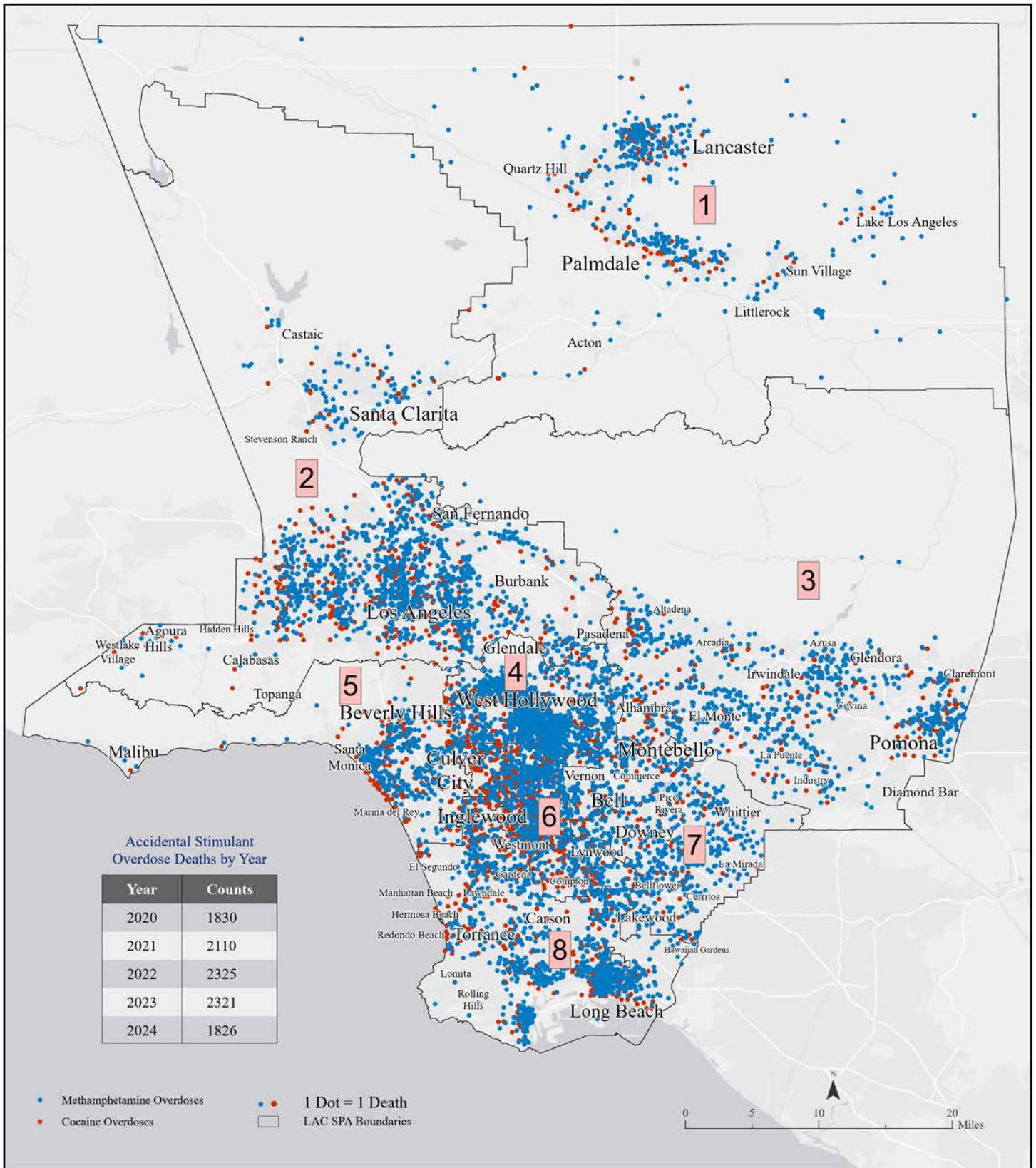


Data sources: SPA boundary retrieved from LAC eGIS repository updated 2022. 2020-2024 drug overdose deaths obtained from the LAC Medical Examiner-Coroner and processed by the Surveillance Data and Evaluation section and map produced by GIS section, Health Outcomes and Data Analytics (HODA) Division at SACP.

Contact: Any questions for the map contact Tina Kim, Ph.D at tkim@ph.lacounty.gov

Please note that drugs involved in an overdose death are not mutually exclusive, as overdose deaths often involve more than one drug

Accidental Stimulant Overdose Deaths by SPA Los Angeles County, 2020 - 2024.

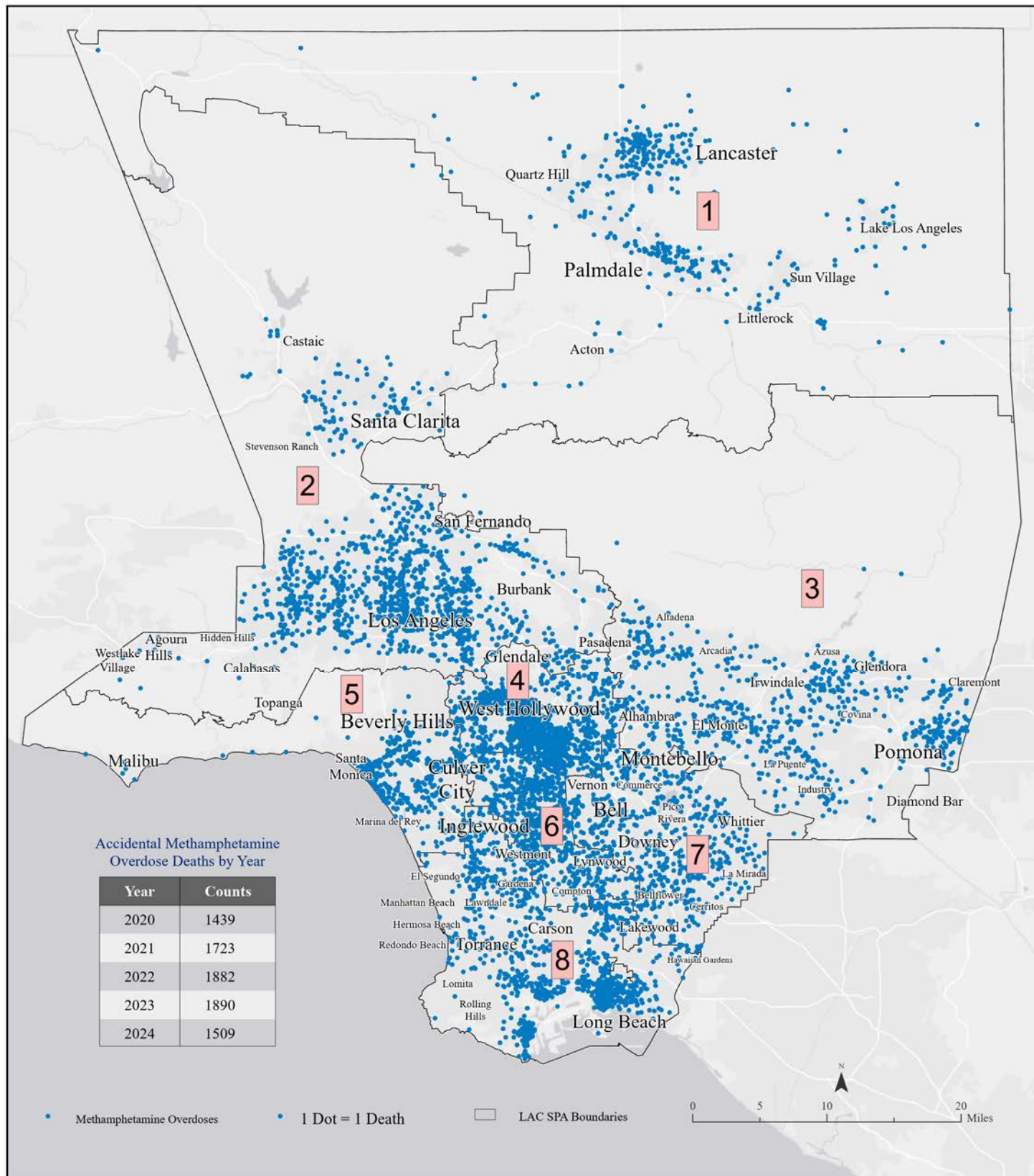


Data sources: SPA boundary retrieved from LAC eGIS repository updated 2022. 2020-2024 drug overdose deaths obtained from the LAC Medical Examiner-Coroner and processed by the Surveillance Data and Evaluation section and map produced by GIS section, Health Outcomes and Data Analytics (HODA) Division at SACP.

Contact: Any questions for the map contact Tina Kim, Ph.D at tkim@ph.lacounty.gov

Please note that drugs involved in an overdose death are not mutually exclusive, as overdose deaths often involve more than one drug

Accidental Methamphetamine Overdose Deaths by SPA Los Angeles County, 2020 - 2024.

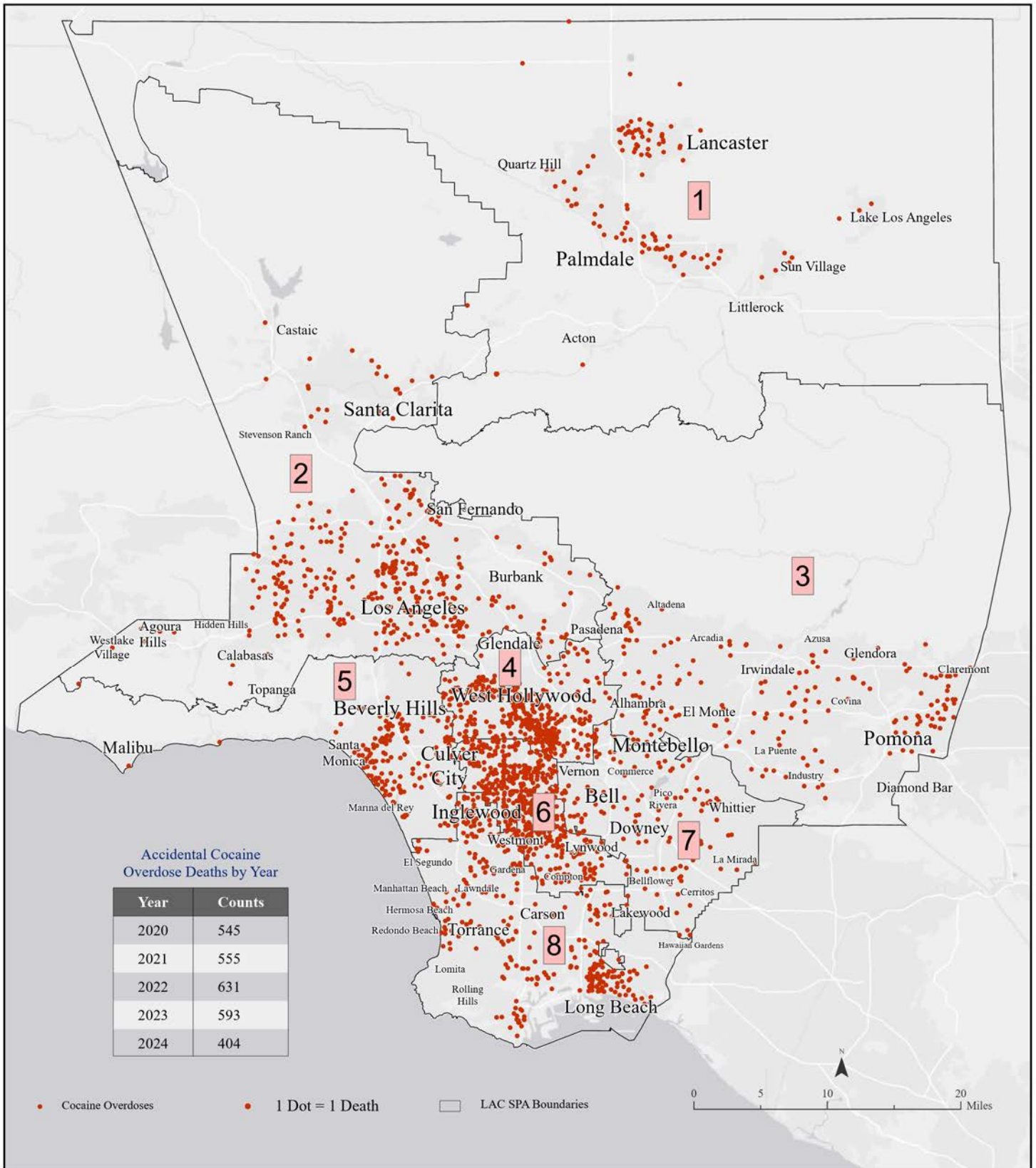


Data sources: SPA boundary retrieved from LAC eGIS repository updated 2022. 2020-2024 drug overdose deaths obtained from the LAC Medical Examiner-Coroner and processed by the Surveillance Data and Evaluation section and map produced by GIS section, Health Outcomes and Data Analytics (HODA) Division at SACP.

Contact: Any questions for the map contact Tina Kim, Ph.D at tkim@ph.lacounty.gov

Please note that drugs involved in an overdose death are not mutually exclusive, as overdose deaths often involve more than one drug

Accidental Cocaine Overdose Deaths by SPA Los Angeles County, 2020 - 2024.



Data sources: SPA boundary retrieved from LAC eGIS repository updated 2022. 2020-2024 drug overdose deaths obtained from the LAC Medical Examiner-Coroner and processed by the Surveillance Data and Evaluation section and map produced by GIS section, Health Outcomes and Data Analytics (HODA) Division at SACP.

Contact: Any questions for the map contact Tina Kim, Ph.D at tkim@ph.lacounty.gov

Please note that drugs involved in an overdose death are not mutually exclusive, as overdose deaths often involve more than one drug